

CTS-800

Palm-size veterinary ultrasound

Compact design & easy operation

Water proof for outdoor operation

Gravity sensor for layout change

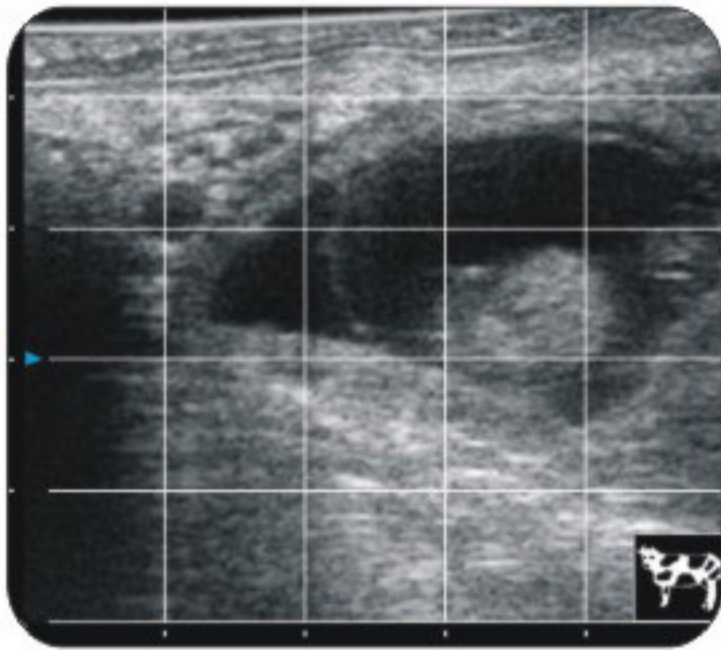
Livestock pregnancy detection



See the future
SIUI

CTS-800

Palm-size veterinary ultrasound



Grid for Estimation



Different Layout

Specifications:

- Monitor: 7-inch WVGA LCD monitor
- Weight: 0.8 kg
- Environmental: IP64 (main unit)
rating: Ip67 (probe head)
- Battery: 4-4.5 hours operating time

- Display mode: B, 2B,ZOOM B,B/M,M
- Depth: Max to 250mm
- B gain: 0~100
- Image storage: 256 frames
- Cine loop: 256 frames
- Image Layout: Gravity sensor for layout change (transverse/vertical)
- Measurement: Distance, area, circumference, volume, angle, heart rate
- Probe: L65/5.0 MHz linear rectal probe (Standard)
L50/7.5MHz linear rectal probe (Optional)
R20/5.0 MHz micro convex probe (Optional)

Main features:

Compact Design

Only with a belt, you can free the ultrasound system from a still trolley or table. Tie the ultrasound system into your body and operate it at any position as you like.

Gravity Sensor

You can operate the ultrasound system either in transversal layout or vertical layout. It can automatically adapt to two different layouts when you rotate it.

Grid for estimation

With grid on the image area, you can easily estimate the size of the target substance like follicle, fertilized egg, etc.



SIUI

Shantou Institute of Ultrasonic Instruments Co., Ltd.

Add: #77, Jinsha Road, Shantou 515041, Guangdong, China

Tel: +86-754-88250150 Fax: +86-754-88251499

E-mail: siui@siui.com Website: <http://www.siui.com>

Specifications and appearance are subject to change without prior notice.

DCY2.782.EN.CTS-800. CY/7B01